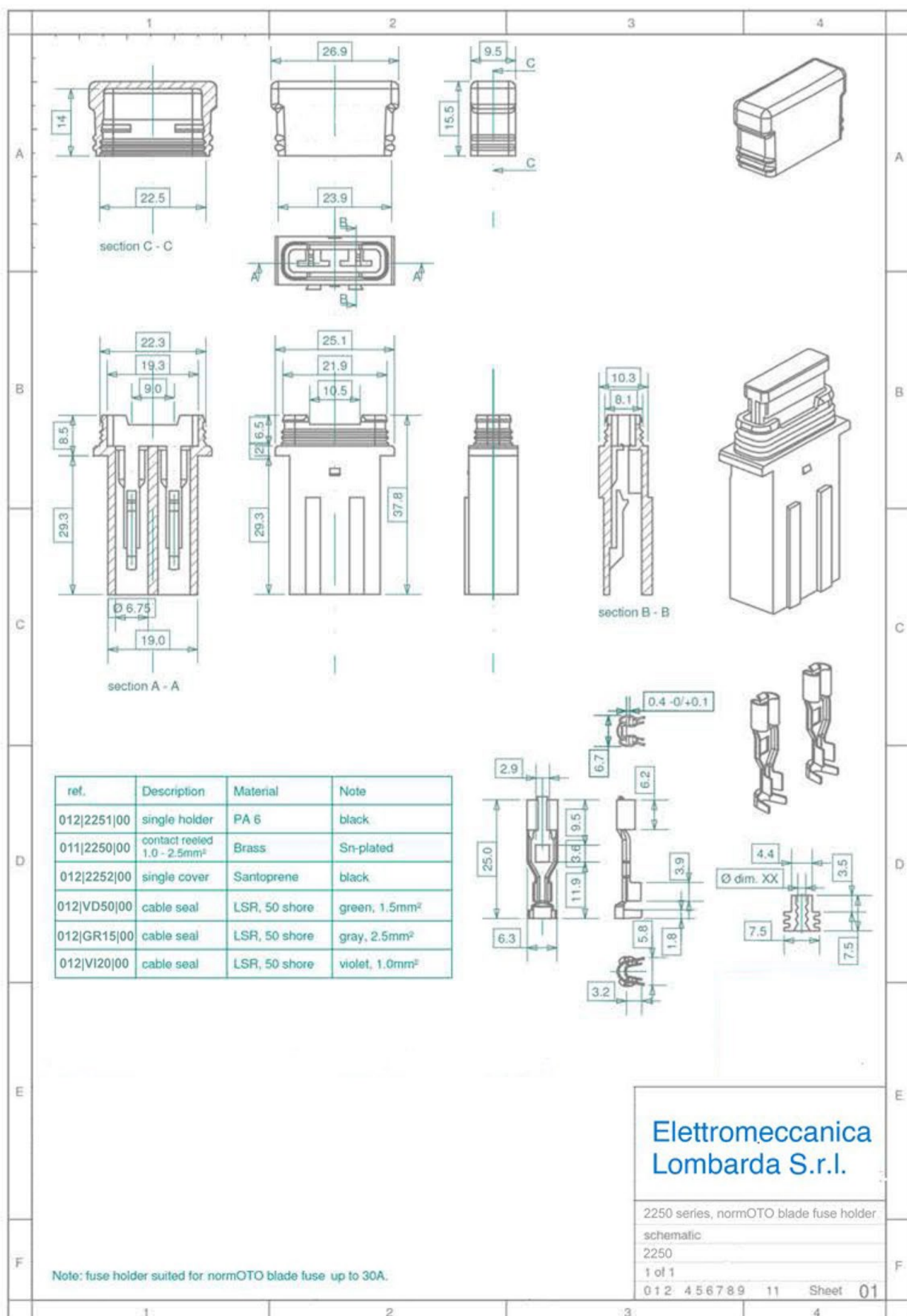
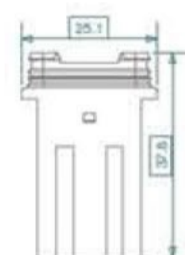
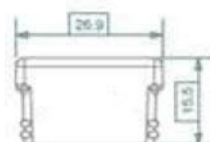


## splash waterproof holder series 2250, normOTO fuse

- Sn-plated fuse receptacles, reeled or loose
- Stackable, to create multi-position holder
- Splash waterproof with cable seals and cover ( IP54 )
- Vertical insertion of fuse receptacles



EML ref.	Description
012 2251 00	series 2250 body
012 2252 00	series 2250 single cover
011 2250 00	series 2250 contact, reeled
012 VD50 00	wire seal, green, 1.5mm <sup>2</sup>
012 GR15 00	wire seal, gray, 2.5mm <sup>2</sup>
012 VI20 00	wire seal, violet, 1.0mm <sup>2</sup>



**Elettromeccanica  
Lombarda S.r.l.**

2250 series, normOTO blade fuse holder  
schematic  
2250  
1 of 1  
012 456789 11 Sheet 01